

BUILDING A HOPEFUL *Future Together*



Nathan FINK
Senior Director Adv.
NH Children's Trust



NEW HAMPSHIRE
Children's Trust
New Hampshire chapter of  Prevent Child Abuse
America



we are
PREVENTION



RESOURCES

STRESSORS

Strengthening Families: Protective Factors

PARENTAL RESILIENCE

Access to CONCRETE SUPPORT in time of need

SOCIAL CONNECTIONS

KNOWLEDGE of Parenting and Child Development

SOCIAL and EMOTIONAL Development of Children

MAKING HAPPEN

Future Together



SOCIAL CONNECTIONS

Simple as it may sound, **SOCIAL CONNECTIONS** with those around you can make all the difference for even someone you can't see or feel to listen, a shoulder to lean on, or a first in a strong social network can provide more than emotional support. It can also help in parenting outlook, and finding other important community connections for the family.

So let's social connections are a lot like stars in the night sky. The more you look for them, the more you find.

A-MAZING RESILIENCE

So if you can help it, be a star.

BUILDERS INC.

The more we realize opportunities of the things you do for jobs to last in the brain below, made a lot of things you'd like to do.

ACTIVE COMMUNITY

Study of the picture below. Can you spot the silly image?
Grab a pen or pencil and circle what you see!



Granite State Network of FAMILY RESOURCE CENTERS

SOCIAL CONNECTIONS

Simple as it may sound, SOCIAL CONNECTIONS with those around you can make the difference for even someone you can't see or feel to listen, a shoulder to lean on, or a friend in a tough situation. Social connections can provide more than emotional support; it can also be a parenting outlet, and finding other important community connections for the family.

Let's social connections are a lot like stars in the night sky. The more you look for!

CONSTELLATIONS OF CONNECTION

Long ago people used to connect stars into patterns, legends, and stories. Can you follow the numbers to make the little star constellation? Name by the Big Bear constellation!

Friend's Corner
Can you make your own constellation? Draw lines in a piece of paper with a pencil and use the numbers from a light. What do you see? Can you create something magical?

A-MAZE-ING RESILIENT

So if you can help it, make it!

BUILDERS INC.

The more we realize experiences all the possibilities for future to have in the brain before, made a lot of things you'd like to do.

Friend's Corner
With your caregiver, draw your face from the list you made.

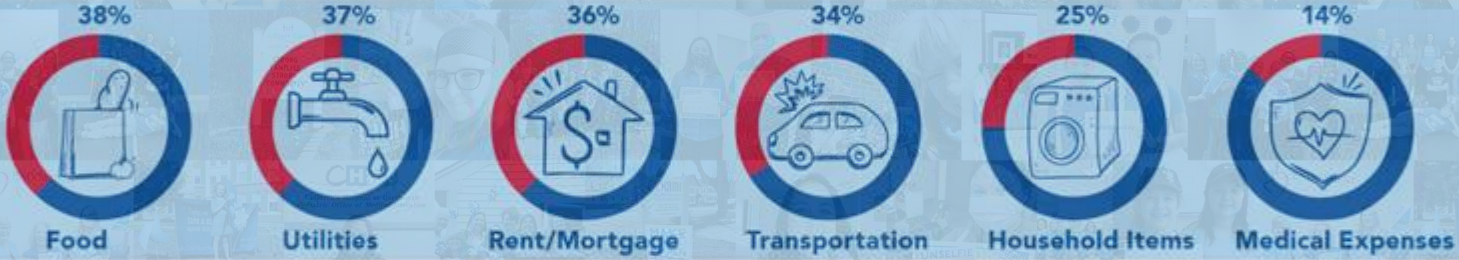
ACTIVE COMMUNITY

Study all the pictures below. Can you spot the silly image? Grab a pen or pencil and circle what you see!

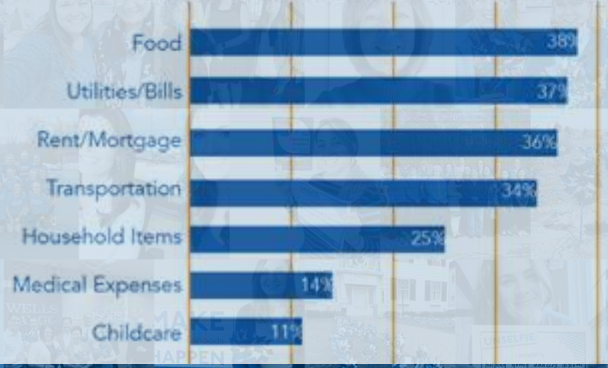
What are the Needs of the Families?

Families are struggling with multiple challenges.

Of the **1,319** families with formal assessments at Family Resource Centers (FRCs) during the calendar year 2022, the percentage of respondents reported **struggling to pay** for the following during the last month prior to completing the Concrete Supports Survey:



Percentage of respondents indicating difficulty affording essential needs during the past month



Percentage of respondents experiencing specific hardships in the last year



Granite State Network of
FAMILY RESOURCE CENTERS

SOCIAL CONNECTIONS

CONSTELLATIONS OF CONNECTION

Simple as it may sound, SOCIAL CONNECTION with those around you can make all the difference for even someone you can't see or hear to listen, a shoulder to lean on, or a hand in a strong social network can provide more than emotional support. It can also be a parenting outlet, and finding other important community connections for the family.

A-MAZE-ING RESILIENT

So if you can help it, make and...

BUILDERS INC.

The more we realize experiences of the families for whom we labor to have? In the brain below, made a lot of things you'd like to do.

ACTIVE COMMUNITY

Study of the picture below. Can you spot the silly image? Grab a pen or pencil and circle what you see!

BUILDING A HOPEFUL Future Together

we are PREVENTION



for families

NH By the Numbers

Data from July 1, 2023 U.S. Census population estimates.

1,402,000	545,000	190,680	63,000	6,800	1,090
People	Households	Children 6-18	Children 0-5	Grandfamilies	Children in foster care

Family Support New Hampshire

NH's network of Family Resource Centers (FRC) help families across the state with everything from parenting classes to financial and economic support.

What are the top needs of families that visit FRCs?

For families that received economic supports to alleviate a potentially destabilizing crisis, 70% of funds since 2023 were used to pay housing, utilities, and transportation costs (including car repair).



Kinship & Grandfamilies

Census data suggests that for every 1 child formally placed with a relative in the foster care system, 14 are being raised by kin outside of foster care.

Sstibeaqi officiatus renda que eum arumeniam quis di odit harum voloriones dolecest, cum fugitatus ellestii saniet officim porererchil illis res res sin nonecabo. Us et ut omninus ini.

What We know...

If we want to eliminate child abuse in New Hampshire, we as a community need a common understanding of what works to reduce neglect.

Access to basic necessities—housing, food, clothing, transportation, medical care, early care and education, etc.—is fundamental to the well-being and economic success of families.

Studies show that supporting families to access and receive adequate and effective economic support can prevent family separation, decrease the risk of repeated neglect, and enhance child and family well-being.

Prevention is community-wide effort that re-imagines that places family at the center of our systems.

85%

In New Hampshire 85% of all substantiated reports of child maltreatment are for substantiated neglect.

181%

Between 1992 and 2020, the UNH Crimes Against Children Research Center found that there was an 181% increase in substantiated child neglect cases in the state, higher than all other states in the US.

Aspire Together

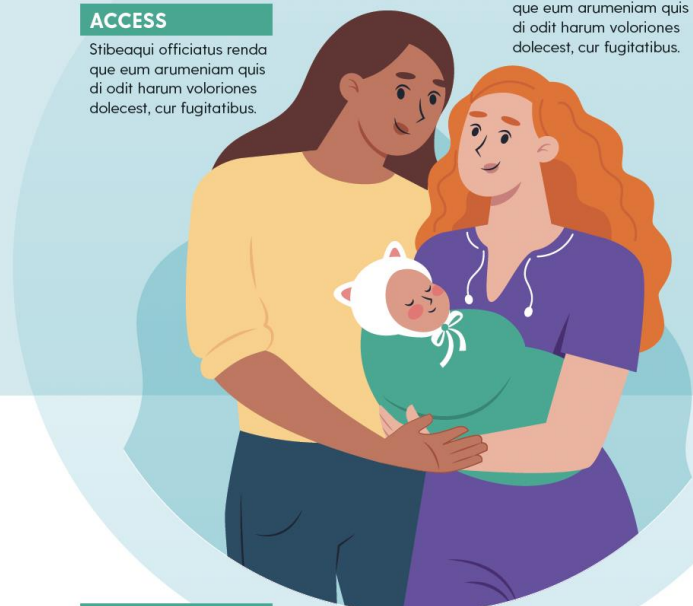
Aspirations for Children and Families

ACCESS

Sstibeaqi officiatus renda que eum arumeniam quis di odit harum voloriones dolecest, cur fugitatus.

SUPPORT

Sstibeaqi officiatus renda que eum arumeniam quis di odit harum voloriones dolecest, cur fugitatus.



STABILITY

Sstibeaqi officiatus renda que eum arumeniam quis di odit harum voloriones dolecest, cur fugitatus.

WELLBEING

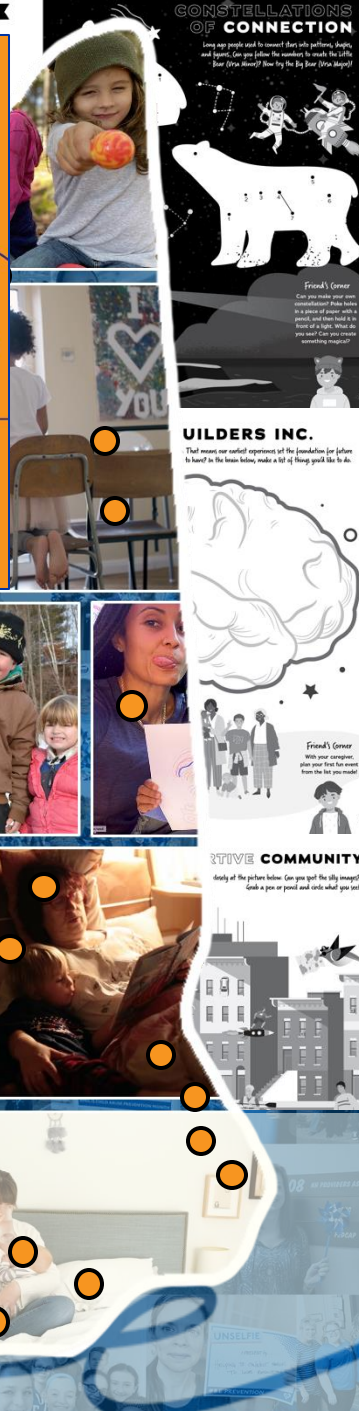
Sstibeaqi officiatus renda que eum arumeniam quis di odit harum voloriones dolecest, cur fugitatus.



Kinship Caregiver Guide



Kinship Navigation Program FAMILY RESOURCE CENTERS



SOCIAL CONNECTIONS



New Hampshire Family NOW

New Hampshire Children's Trust



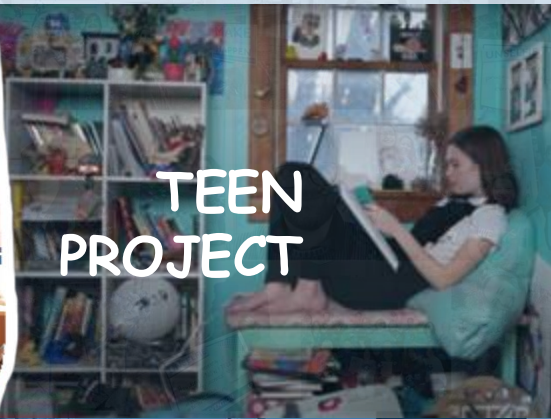
New Hampshire Family NOW is a frank conversation about the ups and downs of parenting co-hosted by Nathan Fink (New Hampshire Children's Trust) and Jasmine Torres Allen (NH PBS). Sometimes funny and irreverent, other times earnest and educational, experts in the field join the show to discuss the state-of-the-state of New Hampshire's family-friendly...



PREVENTION

A-MAZE-ING RESILIENT YOU!

Set if you can help the birds navigate back to the nest! Be creative and keep your group motivated! Remember, it may take a few tries, YOU CAN DO THIS!



CONCRETE SUPPORT

On a piece of paper make a list of things that your family needs. Be there something new you need?



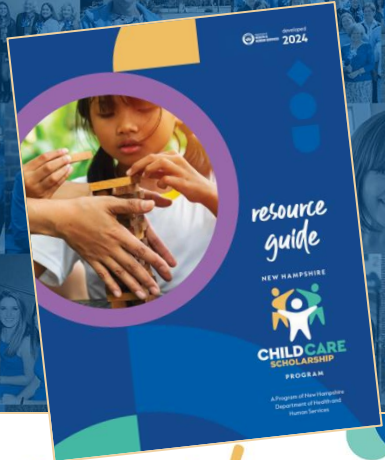
we are

PREVENTION



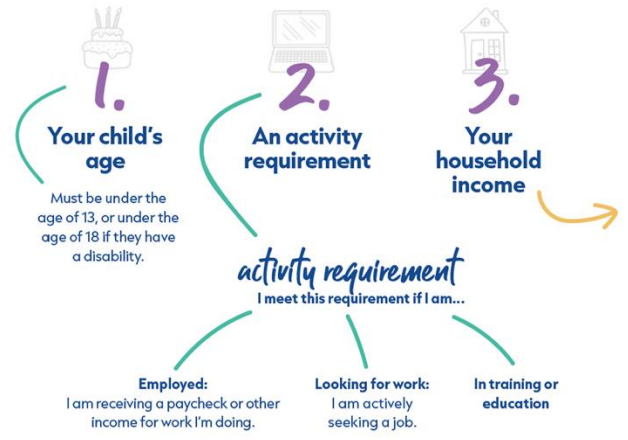


theUpper Room
a family resource center



Understand your eligibility

Eligibility is based on three factors:

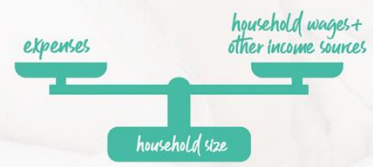


Household income calculation

Household gross income* is one of the factors that determines your family for the Child Care Scholarship. To figure that out, we need to consider all that come into your household, along with other income sources like Social Security payments, spousal/child support, unemployment, pensions, VA payments. We also need to consider household resources, like your checking/savings/annuities, and potentially other possessions.

Your family's gross income and household resources are weighed against household expenses like rent or mortgage, utility bills, medical expenses and dependent care, taxes, and more. A whole host of expenses qualify, so let us help you sort it out.

Lastly, we need to know your family size. How many individuals live in your household? Two, three, four ... more?



*Gross income is the total amount earned before taxes or other deductions.

what do I need to apply?

- A computer to apply at nheasy.nh.gov, OR a phone to call 844-275-3447 and schedule a follow-up appointment, OR transportation or postage to submit the application to your local DHHS District Office.
- About 20 to 45 minutes to apply (depending on application method).
- Contact information: street address, phone number(s), email address, etc.
- Information about your Social Security number.
- Household income information: Social Security, or other.
- Household expenses: taxes, and utilities.
- Household resource information: savings, stocks/ bonds, and other possessions.

what can I expect?

Below are the steps for my family's journey to affordable child care:

- Apply**
 - GATHER the materials I need to fully complete my application (see page 8).
 - SUBMIT my completed application in-person/by mail, over the phone (and schedule a follow-up appointment), or online at nheasy.nh.gov.
- Connect**
 - INTERVIEW to review my application with trained staff and create a verification checklist.
 - COMPLETE the provided verification checklist of additional items by my due date.
 - WAIT & PREPARE. This is a good time for me to review Frequently Asked Questions (page 14-15) to understand things like cost share vs. co-pay or other items.
- Child Care**
 - RECEIVE notification. If all paperwork is submitted, I will receive notification (via my notification preference) regarding my family's Child Care Scholarship eligibility.
 - CELEBRATE. The NH Child Care Scholarship Program is valid for 12 months. 30-days before my year is up, I will need to complete a re-determination process to receive the scholarship again.

What if you don't appear to be eligible?

Don't stop here! Eligibility for the NH Child Care Scholarship Program depends on a lot of different factors and your family may still qualify.

"When in doubt, reach out" is more than just a motto. It's how Granite State families find affordable child care.



Scan here for the most current household income eligibility chart.



What Is Child Care Scholarship?

The NH Child Care Scholarship Program helps eligible New Hampshire families pay for child care by providing direct payments to qualified early childhood and out-of-school time providers for children under the age of 13 years old (or under 18 years old if they have a disability).

[View the Resource Guide](#)

Is My Family Eligible?

In order to be eligible, children may be under 13 years old (or under 18 years old if they have a disability).

Parents must be working, looking for work, or in a training program, and the family's household income must meet current requirements.

Eligibility is redetermined every 12 months and families must reapply annually.

For more information, click the "Understanding Eligibility" button below.

[Understanding Eligibility](#)

How Do I Apply?

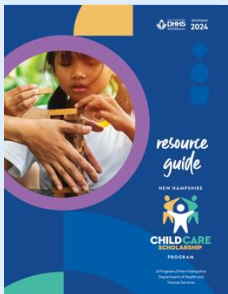
There are many ways you can apply for the NH Child Care Scholarship Program: online, mail submission, in-person, or over-the-phone. Whatever you choose, trained staff are available for you and your family.

Online:

To apply online, visit nheasy.nh.gov and begin your application today. NHEasy is the one-stop-shop for all DHHS services, including but not limited to SNAP, medical assistance, child care and more.

Over the phone:

In-person/Mail Submission:



Helpful Documents:

- Frequently Asked Questions
- Form 2532: Child Care Scholarship Income Eligibility Levels
 - Eligibility Calculation
- Form 2533: Child Care Weekly Rates
- Where can I go for help?
- Sample Application

Are There Other Forms of Child Care Assistance?

Child Tax Credit (CTC)

Families with earned income who claim dependent children under age 17 on their federal tax return may qualify for a refund or credit. Most families eligible for CTC can also file for the Earned Income Tax Credit. If you cannot take the full CTC, you may be eligible for the additional child tax credit if your earned income is more than \$3,000. Taxpayers with three or more children may also be eligible for additional child tax credit regardless of their income.

[More information on the Child Tax Credit](#)

Military Assistance

Families with a family member serving in the military, by law, are eligible for special child care assistance.

[More information on Military Assistance](#)

FAMILIES



Why Enroll to Accept NH Child Care Scholarship?

NH Child Care Scholarship Program reduces the cost of child care for Granite State families, so they can put more of their household's income toward family needs like housing, food, nourishing childhood experiences, and more.

Enrolling to accept Child Care Scholarship provides a stable, enrollment-based source of income to support programming and contributes to overall staff satisfaction by knowing that the families in their care have greater financial security.

Now that Child Care Scholarship eligibility has expanded, more Granite State families qualify, include child care providers themselves.

How Do I Enroll?

To accept Child Care Scholarship, you must be registered in NHCIS and follow the steps below.

Licensed Programs

Submit Forms

Information about forms

Vendor Number

Legally Licensed Exempt Programs

Background Record Checks

Info about BRC

Health and Safety Trainings

Required Forms

Vendor Number

Monitoring Visit

Helpful Documents:

- Child Care Scholarship 101: An Overview
- Child Care Scholarship Enrollment FAQs
- Child Care Scholarship Enrollment Forms by Program Type
- Form 2533-Child Care Scholarship Weekly Standard Rates
- Provider Enrollment Rules
- LE Health and Safety Rules
- LE Facility Based Checklist
- LE Friend or Neighbor Checklist

NHCIS

NHCIS is the New Hampshire Connections Information System for early childhood and out-of-school time programs and professionals. NHCIS includes several components that help professionals, policy makers, and partners make data-driven decisions that improve professionalism and workforce quality to positively impact New Hampshire children and families.

The NHCIS Professional Registry allows providers to:

- View and assess professional development
- Register for trainings and track professional growth
- Obtain a Registry ID to link ProSolutions account
- Complete Credentialing application online
- Apply for background record checks and more...

NH Easy

DHHS offers online services through NH EASY Gateway to Services, New Hampshire's Electronic Application System, where Granite Staters can apply for programs such as cash assistance, SNAP, NH Child Care Scholarship, Medicare Beneficiary, Long Term Care Assistance and more. Applicants can use NH EASY to check eligibility of multiple programs at once, track application status, and more.

[Click Here to Access NHCIS](#)

[Click Here to Visit NH Easy](#)

Download Child Care Scholarship Marketing Materials

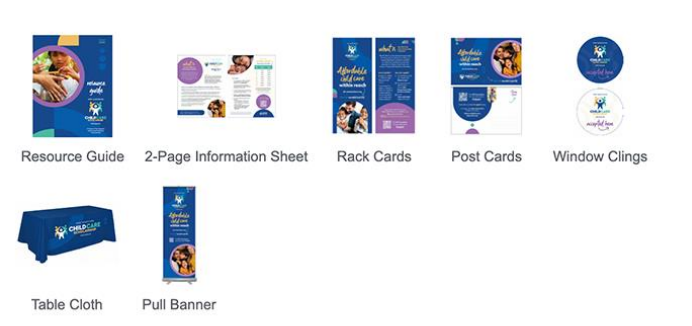
Materials Request Form

The following NH Child Care Scholarship materials are available at no cost to child and family serving organizations to raise awareness of a program designed to help NH families pay for the cost of child care.

To download digital materials or for more information about the NH Child Care Scholarship Program and other State services visit NH-Connections.org.

Which materials will help the families you serve? (Choose all that apply)

Click on the images below to pre-order NH Child Care Scholarship materials and answer the associated questions. [Click here to learn more about these materials.](#)



Where would you like these materials shipped to?

Organization Name*

Organization Type*

- Child Care Provider
- Education
- Family Support Services
- Health Care
- Mental Health Service Provider
- State Agency
- Other

PROVIDERS

Materials Orders	English
One-Pager	4875
Post Card	1675
Pull Banner-Floor	11
Pull Banner-Tabletop	13
Rack Card	5200
Resource Guide	3975
Table Cloth	17
Window Cling	160
	15926

Language	Arabic	Bosnian	Chinese	Dzongkha	French	Kinyarwanda	Mandarin	Nepali	Portuguese	Russian	Spanish	Swahili	Tamil	Vietnamese	
One-Pager	225		10	25	225	150	2	35	325	2	1035	125	25	20	2204
Post Card															0
Pull Banner-Floor															0
Pull Banner-Tabletop															0
Rack Card	450	100	25		225	300		150	575		1525	175		20	3545
Resource Guide	100		10	25	125	50	2	35	50	2	775			30	1204
Table Cloth															0
Window Cling															0
	775	100	45	50	575	500	4	220	950	4	3335	300	25	70	6953

EC Region	# Orders
Region 1: Greater Monadnock, Greater Sullivan, and Upper County	12
Region 2: Capital Area	15
Region 3: Greater Nashua	5
Region 4: Greater Derry and Manchester	18
Region 5: Central NH and Lakes	7
Region 6: Strafford County and Seacoast	25
Region 7: North Country and Carroll County	17
Totals	100

Presentations:

- 26 presentations
- 18 hours total
- 600+ attendees

we are

PREVENTION

email: info@nhchildrenstrust.org



NEW HAMPSHIRE
Children's Trust

New Hampshire chapter of  Prevent Child Abuse
America