



NH Council for Thriving Children
6.19.24

Agenda

Meeting Purpose/Goals:

- ✓ Stay informed on legislative changes impacting early childhood
- ✓ Learn about baseline Measures of Success data
- ✓ Hear updates from Department of Education and Department of Health and Human Services
- ✓ Learn about and provide feedback on NH's Child Care Development Fund plan
- ✓ Receive an update on ACF's next round of Preschool Development Grants

A	Topic	Leader(s)
9:00-9:30	Welcome & Council Business <ul style="list-style-type: none"> ➤ Introductions ➤ Council business 	Christine Brennan, NH ED, Deputy Commissioner Tricia Tilley, NH DHHS, Associate Commissioner Christina Lachance, Council Director
9:30-9:45	Legislative Updates	Senator Whitley, Representative DeSimone
9:45-10:15	Measures of Success	Athena Cote, Lead, NH DHHS Early Childhood Integration Team Alexa Simmons, Lead, NH ED Early Childhood Integration Team
10:15-10:45	NH's Child Care Development Fund Plan	Jessie Davis, Bureau Chief, Child Development and Head Start Collaboration
10:45-11:00	Public input & closing	Christine Brennan, NH ED, Deputy Commissioner Tricia Tilley, NH DHHS, Associate Commissioner

New Hampshire Early Childhood Governance System



Council business & updates

Meeting recordings

Approve meeting minutes

Summer Break

ECGFP Technical Assistance

CCDF Plan



Decision-Making and Operationalization Role

Data driven policy and program coordination, integration, and development, increasing performance and resource accountability



Communication Role

Ensure effective communication across the Governance structure with and through designated members from each quadrant



Interagency Coordination

Formal infrastructure to support Interagency Coordination



Advising and Strengthening Role

Sharing emerging trends for children, families, communities, workforce and business, while generating learning and capacity

Legislative Updates





Measures of Success



Priority Outcomes

- Increase families' partnership in, knowledge of, and choices for their child's development
- Increase families' access to integrated quality early childhood opportunities and services
- Increase comprehensive wellness of young children
- Ensure children achieve early childhood developmental and educational goals
- Increase providers' and educators' knowledge and access to resources for quality programs and services

Themes	Objectives	Initiatives
Strategic Theme 1 Quality, consistent, equitable access to opportunities and services for all NH families	1. Increase early intervention and primary prevention 2. Increase accessible childcare and early learning options 3. Increase family awareness, voice, influence, engagement and knowledge 4. Enhance quality of early childhood programs and services	1a. Normalize utilization of early intervention and primary prevention services among all families 1b. Increase provider awareness of and collaboration with all available primary prevention and early intervention services 2a. Expand eligibility for childcare assistance costs, increase the amount of assistance for each family, and increase awareness and utilization of NH Child Care scholarship assistance 2b. Expand options for and access to childcare and early learning statewide, particularly in areas where options are limited 3a. Establish a Statewide Family Engagement Framework including feedback loops 3b. Expand universal home visiting to every baby in New Hampshire 3c. Expand NH parent/caregiver access to family support/Family Resource Centers (FRCs) 4a. Increase participation in NH QRIS 4b. Increase family awareness of quality care and early learning options
Strategic Theme 2 Early childhood workforce capacity and quality	1. Increase workforce 2. Increase workforce knowledge regarding early childhood development	1a. Promote early childhood careers and career path 1b. Promote the availability of workforce incentives and tax credits and expand them beyond early childhood education to include family support and health 2a. Equip the early childhood workforce with knowledge of child development and evidence-based practices to meet the needs of children and families
Strategic Theme 3 Investment in early childhood programs and services	1. Leverage and sustain new and existing funding 2. Increase business and community support for early childhood programs and services	1a. Create and implement a comprehensive early childhood system funding plan including federal, state, local, and private sources 1b. Develop and implement a comprehensive study of compensation, benefits, and incentives across the various roles within the early childhood field 2a. Create and implement a plan to increase businesses' financial investment in the early childhood system 2b. Create and implement a plan to increase community awareness of and engagement in building the capacity of the early childhood system
Strategic Theme 4 Systems integration	1. Increase state, regional, and local level collaboration and program integration 2. Enhance family navigation of integrated programs and services 3. Increase community voice and influence in design of programs and services	1a. Affirm and institutionalize the early childhood regions and networks, ensure ongoing support, and foster collaboration with families and local communities 1b. Formalize, strengthen and broaden local early childhood coalitions that integrate with regional and state structures 1c. Establish a shared, compatible early childhood data system to inform decision-making 2a. Establish and promote a comprehensive and inclusive system leveraging existing tools for families to navigate and access resources 2b. Increase individualized support for families in navigating the system 2c. Build cultural and linguistic competence of the early childhood system and professionals to better support families 3a. Create approaches to specifically engage under-represented groups to influence decisions about programs and services that affect them
Strategic Theme 5 Office of Early Childhood	1. Ensure a cohesive and collaborative approach to a mixed-delivery, early childhood system 2. Expand public understanding of the importance of quality early childhood experiences for all children	1a. Establish a collaborative process to define the role of the Office of Early Childhood, including authority, functions, structure, and resources 2a. Coordinate messaging across key early childhood champions to ensure a diverse set of voices that will expand public understanding of the importance of early childhood experiences for all children and families 2b. Clarify and communicate roles and responsibilities of the early childhood system to include early childhood agencies, families, policy makers, and service providers

NH Strategic Plan for Early Childhood – Priority Outcomes

- Increase families' partnership in, knowledge of, and choices for their child's development
- Increase families' access to integrated quality early childhood opportunities and services
- Increase comprehensive wellness of young children
- Ensure children achieve early childhood developmental and educational goals
- Increase providers' and educators' knowledge and access to resources for quality programs and services

Measures of Success

Baseline 2023

Priority Outcome 1: Increase families' partnership in, knowledge of, and choices for their child's development		
Measure of Success	Responsible Entity	2023 Calendar Year
		Estimate
Number of children enrolled in Family-Centered Early Supports and Services*	DHHS	4576
Number of children enrolled in Preschool Special Education*	NHED	2741
Number of families enrolled in home visiting; Maternal, Infant, and Early Childhood Home Visiting (MIECHV), Medicaid, or Comprehensive Family Support Services (CFSS)*	DHHS	for CFSS 1188 for MIECHV 357 families
Number of parents/caregivers enrolled in parenting skills groups/classes through FRC.	DHHS	5287
Number of children enrolled in center-based and family-based child care	DHHS	53547
Number of children enrolled in public preschool programs	NHED	4440

Measures of Success

Baseline 2023

Priority Outcome 2: Increase families' access to integrated quality early childhood opportunities and services

Measure of Success	Responsible Entity	2023 Calendar Year
		Estimate
Number of family resource centers with quality designation (FRC-Q)	DHHS	12
Number of early childhood and out-of-school-time (OST) licensed and license-exempt child care providers (or slots) statewide*	DHHS	733
Number of licensed and license-exempt child care providers in communities with low (below median) or no access to licensed care*	DHHS	264
Number of children receiving child care scholarship*	DHHS	2744
Number of families receiving system navigation support through FRC.	DHHS	6407
Number of utilization of child care slots (enrollment: available slots)	DHHS	5191

Measures of Success

Baseline 2023

Priority Outcome 3: Increase comprehensive wellness of young children		
Measure of Success	Responsible Entity	2023 Calendar Year
		Estimate
Number of children whose mothers received early (1st trimester) prenatal care	DHHS	10055
Number of women enrolling in WIC (prenatal and overall) [overall=prenatal, Post partum and Breastfeeding]	DHHS	Prenatal-743 Overall-2,249
Number of children 72 months and under with elevated blood lead levels of 3.5 + dL/ug Pb	DHHS	1006 (816 are new cases and 190 had elevated levels the year prior as well)
Percent of young children (birth through under age 6) with no health insurance	DHHS	(1)-Total Pop estimate - 75,371 (±2,395) (2) w/ No Insurance estimate - 2,053 (±864) (3) % w/ No Insurance 2.7% (±1.1)
Number of Ages & Stages Questionnaires (ASQ-3) administered and Ages & Stages Questionnaires: Social Emotional (ASQ:SE-2) administered not resulting in monitoring or referral	DHHS	HFA- ASQ-3: 287 ASQ:SE:139 for FRC's 314

Measures of Success

Baseline 2023

Priority Outcome 4: Ensure children achieve early childhood developmental and educational goals		
Measure of Success	Responsible Entity	2023 Calendar Year
		Estimate
Percentage of students scoring proficient or above on 3rd-grade reading	NHED	49.61
Number children with an IFSP requiring an IEP or 504 Plan	DHHS, NHED	
Number of children enrolled in Family-Centered Early Supports and Services* (duplicate see line 6)	DHHS	4576
Number of children enrolled in Preschool Special Education* (duplicate see line 7)	NHED	2741
Number of Ages & Stages Questionnaires (ASQ-3) administered and Ages & Stages Questionnaires: Social Emotional (ASQ:SE-2) administered not requiring monitoring or referral (duplicate see line 40)	DHHS	HFA- ASQ-3: 287 ASQ:SE:139

Measures of Success

Baseline 2023

Priority Outcome 5: Increase providers' and educators' knowledge and access to resources for quality programs and services

Measure of Success	Responsible Entity	2023 Calendar Year
Number of center- and family-based child care programs participating in the Granite Steps for Quality (GSQ) and awarded a step	DHHS	128
Number of professionals receiving a new, renewed, or advanced Early Childhood (EC), Out-of-School Time (OST), or Early Childhood and Family Mental Health (ECFMN) credential.	DHHS	726
Number of teachers receiving or renewing Beginning Educator licenses, Experienced Educator licenses, and Master Teacher Certificate in early childhood education	NHED	1500
Number of enrollment in the Teacher Education And Compensation Helps (TEACH) program	DHHS	88
Number of early childhood post-secondary education tuition assistance program courses/grants completed	DHHS	141



During 2023, over 10,000 New Hampshire moms received early (1st trimester) prenatal care...enough to fill the SNHU arena in Manchester!

1006 New
Hampshire
children have
elevated blood
lead levels

*For more information contact:
1-800-897-LEAD or
LeadRN@dhhs.nh.gov*





Free and
voluntary
home visits

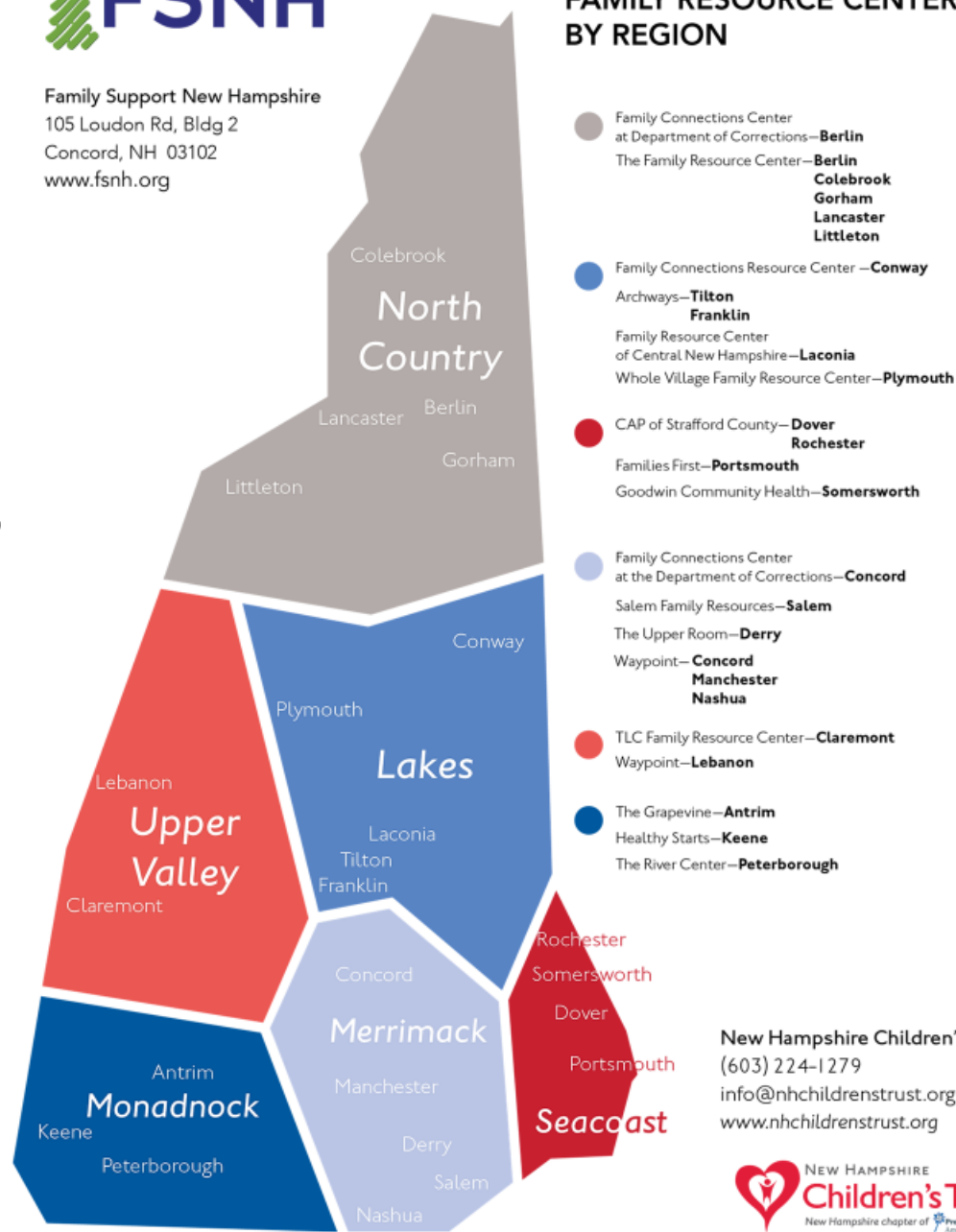
In New Hampshire, only 1545 families participated in voluntary home visiting programs. Family Support home visiting focuses on nurturing the parent-child relationships and enhancing connections between the family and community-based resources. As a child's first teacher, the relationship babies have with their caregiver(s) create the foundation for lifelong health and well-being.

In 2023, 5287 caregivers participated in parent education and skill building classes at NH's Family Resource Centers



Family Support New Hampshire
105 Loudon Rd, Bldg 2
Concord, NH 03102
www.fsnh.org

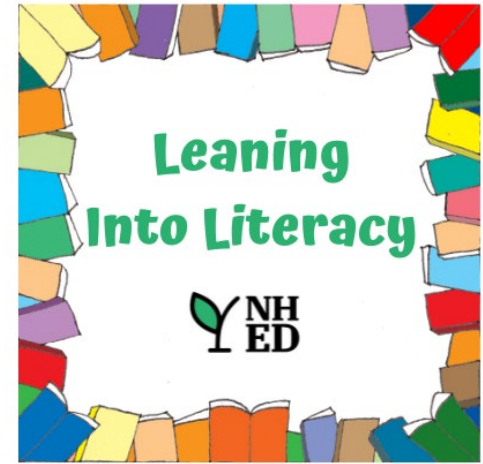
NEW HAMPSHIRE FAMILY RESOURCE CENTERS BY REGION



New Hampshire Children's Trust
(603) 224-1279
info@nhchildrenstrust.org
www.nhchildrenstrust.org



NH LOVES READING



49% of New Hampshire students scored proficient or above on 3rd-grade reading

New in 2023: NH public schools and public charter schools are required to conduct a reading screener with all children in Kindergarten through 3rd grade.

In 2023, more than 7300 New Hampshire children participated in special education services before entering Kindergarten, greater than the capacity at the Whittemore Center/UNH Hockey game.

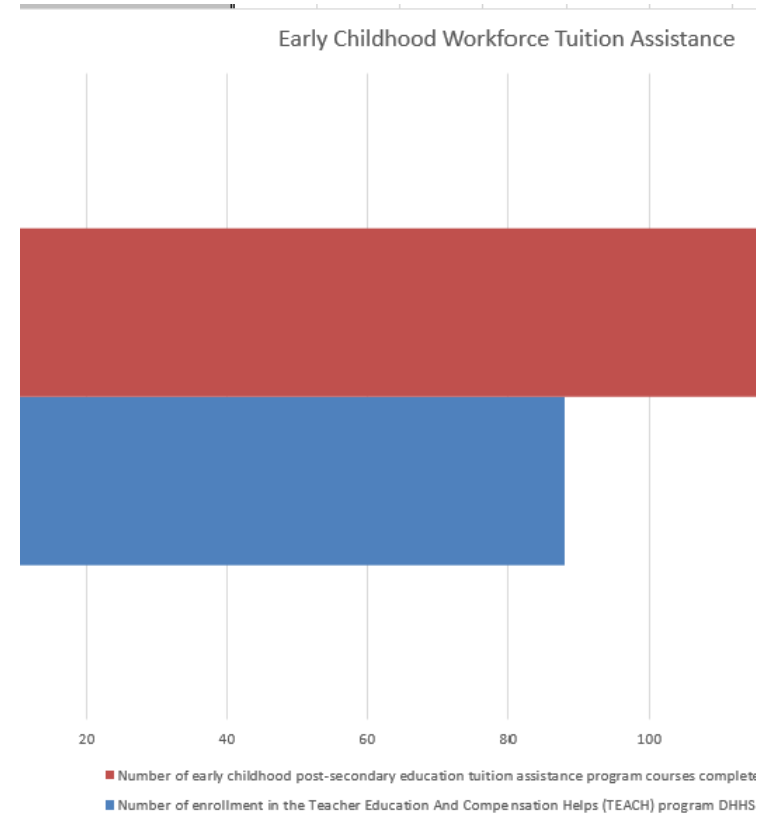




New Hampshire expands Child Care Scholarship Eligibility

- 2744 was 2023 monthly average utilization rate for NH's Child Care Scholarship program
- SFYs 2024-2025 biennium budget, enacted July 1, 2023, expanded family income eligibility for Scholarship recipients
- Reduced family cost share contributions to no more than seven percent of household income for eligible families,
- Increased reimbursement rates for providers accepting scholarships.
- Program is anticipated to be ready for implementation in 2024.

NH supports early childhood workforce with tuition assistance



Child Care Development Fund State Plan Presentation





CCDF State Plan 2025-2027

Bureau of Child Development and Head Start Collaboration

Jessie Davis, Bureau Chief

Improving Child Care Access, Affordability, and Stability in the Child Care and Development Fund

- Lower child care costs for families
- Improve payments to child care providers
- Increase child care options for families
- Make enrollment easier and faster for families
- Increase clarity in CCDF requirements

Partnering to Serve

Our combined voice, and subsequent impact stems from support and collaboration with organizations identified by BCDHSC's vision and mission planning. The following pages contain important information to contextualize our partnerships and provide greater understanding of priorities, roles, and opportunities for impact. **Together, utilizing three core functions, we will create a strong foundation on which New Hampshire families can thrive.**



Key Activities

25

Quality Programs

Child Care Licensing
Scholarship Program Enrollment
Licensed Plus
Granite Steps to Quality

Qualified Workforce

Training Office
Professional Development
Registry System
Credentialling System
Academic Scholarships

Access to Services

Scholarship Enrollment for Families
Child Care Resource and Referral
Program Promotion and Engagement

Core Function Goals and Key Priorities

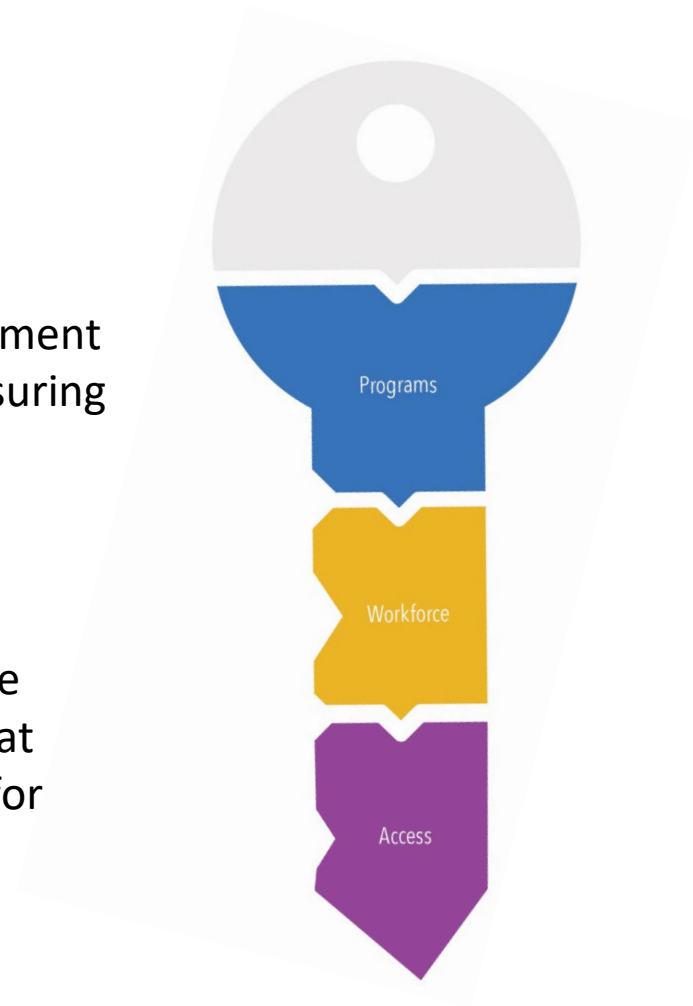
Quality Programs

Goal Statement

Our goal is to support continuous quality improvement in early childhood care and education settings ensuring that every child receives safe, responsive, and enriching interactions and environments.

Key Priorities

We are committed to creating systems that ensure programs implement evidence-based practices that enhance the learning experiences and outcomes for children.



Core Function Goals and Key Priorities

Qualified Workforce

Goal Statement

Our goal is to elevate the professionalism and expertise of the early childhood care and education workforce.

Key Priorities

We provide accessible, comprehensive training programs, certifications, and advanced education pathways that enhance knowledge, skills, and competencies.



Core Function Goals and Key Priorities

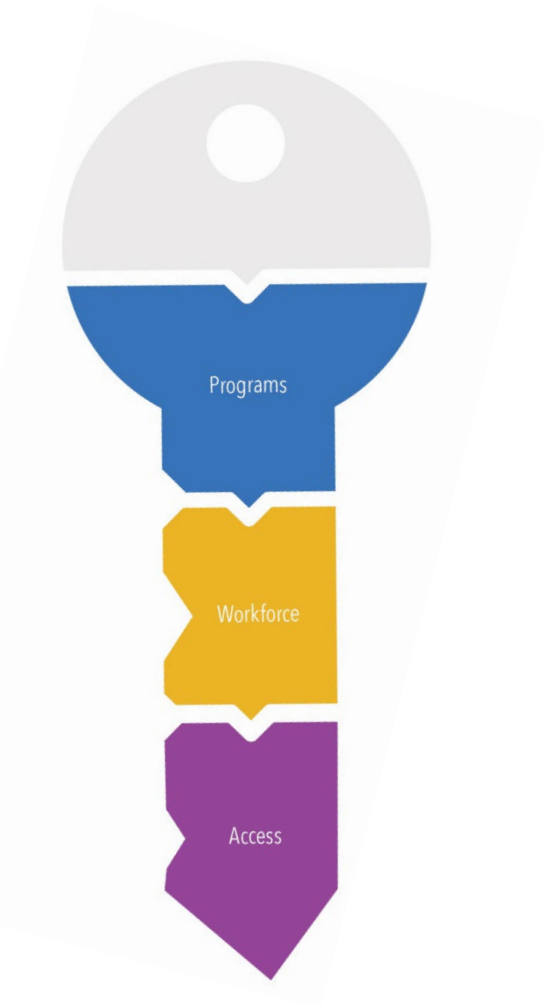
Access to Services

Goal Statement

Our goal is to increase access within and across a mixed delivery early care and education system that provides families with an affordable range of options to meet their families' unique needs.

Key Priorities

We seek to empower parents to make informed decisions that supports the well-being and development of their children by expanding affordable and culturally responsive services including non-traditional and flexible options for families.



Core Function Goals and Key Priorities

While **Quality Programming** conducted by a **Qualified Workforce** are key priorities for the BCDHSC and critical to successfully and sustainability fulfilling its mission, for the purpose of this document the focus of communications strategizing and tactical development will be creating **Access to Services** through **Program Promotion and Engagement**.

To effectively promote and engage early care and education (ECE) programs and their families, our objective is to increase awareness, accessibility, and participation in high-quality ECE and OST opportunities. By fostering strong partnerships with program providers and stakeholders, we seek to create systems that maximize potential for children's holistic development and learning outcomes that enhances families' well-being and engagement in their children's educational journey.

Vision

We provide resources to communities so that every family, regardless of background or circumstance, has equitable access to affordable high-quality early childhood care and education.

Mission

Through collaborative partnerships, we strive to create a landscape where every family can access diverse, affordable, and culturally responsive child care options that best meet their needs.

Responsibilities

- We equip families with the resources, support, and information needed to make informed decisions about their children's care and education.
- Through collaborative partnerships, advocacy, and community engagement, we strive to create a landscape where every family can access diverse, affordable, and culturally responsive options that best meet their needs.

Section 1

CCDF Administration

Consultation in the Development of the CCDF Plan

- Consultation efforts in CCDF Plan Development
 - General purpose local government
 - State Advisory Council — Council for Thriving Children & Child Care Advisory Council
- Public Hearing Process (June 27, 2024)
 - For remote access, email: dhhs.childdevelopment@dhhs.nh.gov
- Public Availability of final Plan, amendments and waivers
 - Posted on DHHS website

Section 2

Child and Family Eligibility & Enrollment and Continuity of Care

Easier and Faster Family Enrollment

- **Required:** Policies minimize disruption to families
- **Encouraged:** Presumptive eligibility
 - Use other benefit program documentation to enroll families
 - Online enrollment procedures

Priority Areas: Grants and Contracts

- Priority services for vulnerable children and families
- Promoting Continuity of Care: grants and contracts for child care slots

Non-compliance: 12 month eligibility

Section 3

Child Care Affordability

Lower Family Costs: Co-pays capped at 7%

- **Recommended:** Waive parent co-pays

Priority Areas:

- Market Rate Survey/Narrow Cost Analysis
- Adequate Payment Rates
- Payment Practices
- Supply Building

Section 4

Parental Choice, Equal Access, Payment Rates, and Payment Practices

Required: Enrollment based PROSPECTIVE payments

- Some grants/contracts:
 - Infants/Toddlers
 - Children with disabilities
 - Underserved areas
 - Build nontraditional hour supply

Encouraged: Pay provider's full established rate

Non-compliance: Data on additional charges to families

Section 5

Health and Safety of Child Care Settings

Priorities Areas:

Achieving compliance

- **Rule Changes**
 - Shaken Baby Syndrome/Abusive Head Trauma
 - Inclusion of Volunteers and Substitutes
 - Background Checks
- **Strengthening Professional Development**
 - Inclusion of all 11 Health and Safety topics
 - Processes for engaging content expertise
 - Process for updating training content

Section 6

Support for a Skilled Qualified & Compensated Child Care Workforce

Priority Areas: Professional Development System

- Pathways and Badges
- Process for updating trainings
- Improvements to training delivery and access
- Aligning with other systems and programs
- Incentives for child care workforce

Section 7

Quality Improvement Activities

Priority Areas:

- Needs Assessment updates/ARPA-D evaluations
- Desired Results Developmental Profile crosswalk and inclusion in QRIS system
- Enhancing Granite Steps for Quality
- Improving supply of quality infant and toddler child care services
- Expanding statewide system of CCR&R services
- Facilitating compliance with licensing monitoring and inspections of health and safety standards
- Evaluation and assessment of quality and effectiveness of child care services

Section 8

Lead Agency Coordination & Partnerships to Support Service Delivery

Priority Areas: State Leadership Team Development

- Coordination of **REQUIRED** Partners
- Coordination of **OPTIONAL** Partners
- Coordination with Child Care Resource and Referral Systems
Regional support to include: Quality Consultants, Resource Specialists, Health Consultants
- Public-Private Partnerships
 - Engagement of Business Sector
 - Potential Pilots for Contracts to blend funding to support child care supply

Family Outreach and Consumer Education

Priority Areas:

- Consumer Education Website — RFP for new website development
- Increasing Engagement and Access to Information-
 - Scholarship Marketing Campaign
 - Provider Enrollment Marketing Campaign
- Quarterly and Annual Reporting

Program Integrity and Accountability

Priority Areas:

- Organizational Structure
- Fiscal Management Practices
- Identifying Risk
- Training on CCDF requirements and program integrity
- Internal control activities



Questions?



Public Comment