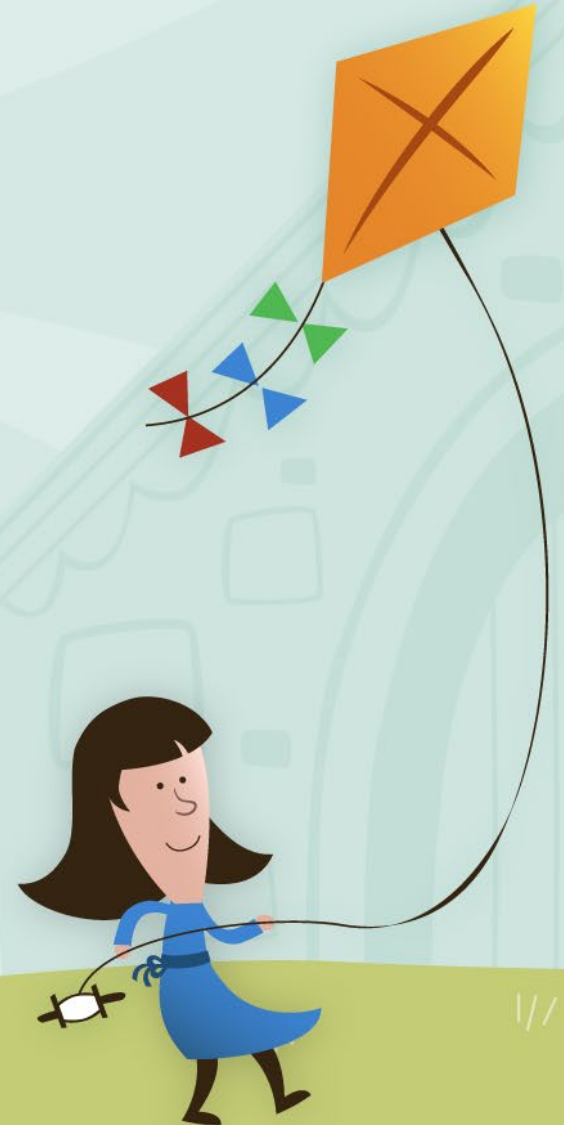


# Kearsarge Regional Preschool at Bradford

An ESSER III Funded Project:  
Early Learning, Inclusion, Equity



# Historical Background

- Preschool program for students with disabilities began in 1984, originally serving SAU43 and SAU65 students until 1990
- Eligible students received special education services in the district program utilizing various rented spaces
- Others obtained supports by district personnel while attending daycare
- In 2008, “James House Preschool” adopted an Early Learning Model with disabled students and non-disabled age peers learning alongside each other, located at the old KRMS in New London
- Tuition-based program for 3- and 4-year-old non-disabled youngsters



# Opportunity Meets Need

- Steady increase in special education needs for early learners
- Space limitations at existing campus in New London
- Disadvantage for parents/students living in the Southern part of the district
- Pandemic impact on learning most significant for youngest students
- ESSER III funding provides opportunity to expand preschool at Bradford
- 75% of ESSER III (\$1,127,639) utilized to construct and equip KRPS-Bradford





# Preschool Construction Bradford Elementary School - 2023





# KRPS at Bradford

## KRPS at New London

### **One Program – Two Locations:**

- 2 Certified ECE teachers each
- 2+ Paraeducators each
- Two 2.5 Hour Morning Session for 3-year-olds
- Two 4 Hour Programs w/Lunch for 4-year-olds
- Shared related services (OT, SLP, PT, BCBA, Nursing, School Psychologist, Social Worker)
- Staffing, Playground, Classroom Equipment is district funded



# Enrollment Trends and Student Profiles

- James House:
  - September 2020: 21
  - September 2021: 35
  - September 2022: 45
- KRPS-Bradford: 32
- KRPS-New London: 28
- **September 2023 Total: 60**
- Disability Categories Served
  - Developmental Delay
  - Autism
  - Hearing Impairment
  - Vision Impairment
- New Identifications as referred by ESS and 3-year birthday



# Review of Start of Operations

## Recent Adjustments in Schedule and Program

- Setting up Physical Space
- Hiring and Integrating New Staff at the Bradford Site
- Public Relations and Grand Opening Event
- Transportation
- Adjustment of Schedule, Length of Program, and Enrollment Options





# Building Foundations for Learning

- Early Literacy
- Early Numeracy
- Build Excitement for Learning
- Develop Exploration Skills
- Practice Language Skills
- Use Play as a Medium
- Master Challenges and Tasks in Various Environments





# Social-Emotional Learning

- Classroom Communication and School Rules
- Make and Keep Friends
- Problem Solving Skills
- Sharing, Taking Turns, Self Advocacy
- Conflict Resolution
- Play Skills
- Understand Thoughts and Emotions



# Individualized Special Education Services

- Speech-Language and Communication Services
- Occupational and Physical Therapy
- BCBA (Behavior) and Psychological Services
- Dual Certified Early Childhood Educators
- Paraeducator Classroom and Individual Support
- Social Work Assistance
- Parent Support



# Thank You

