



**New Hampshire's**  
**Preschool Development Grant**

# NH's Early Childhood Regional System



# The Vision

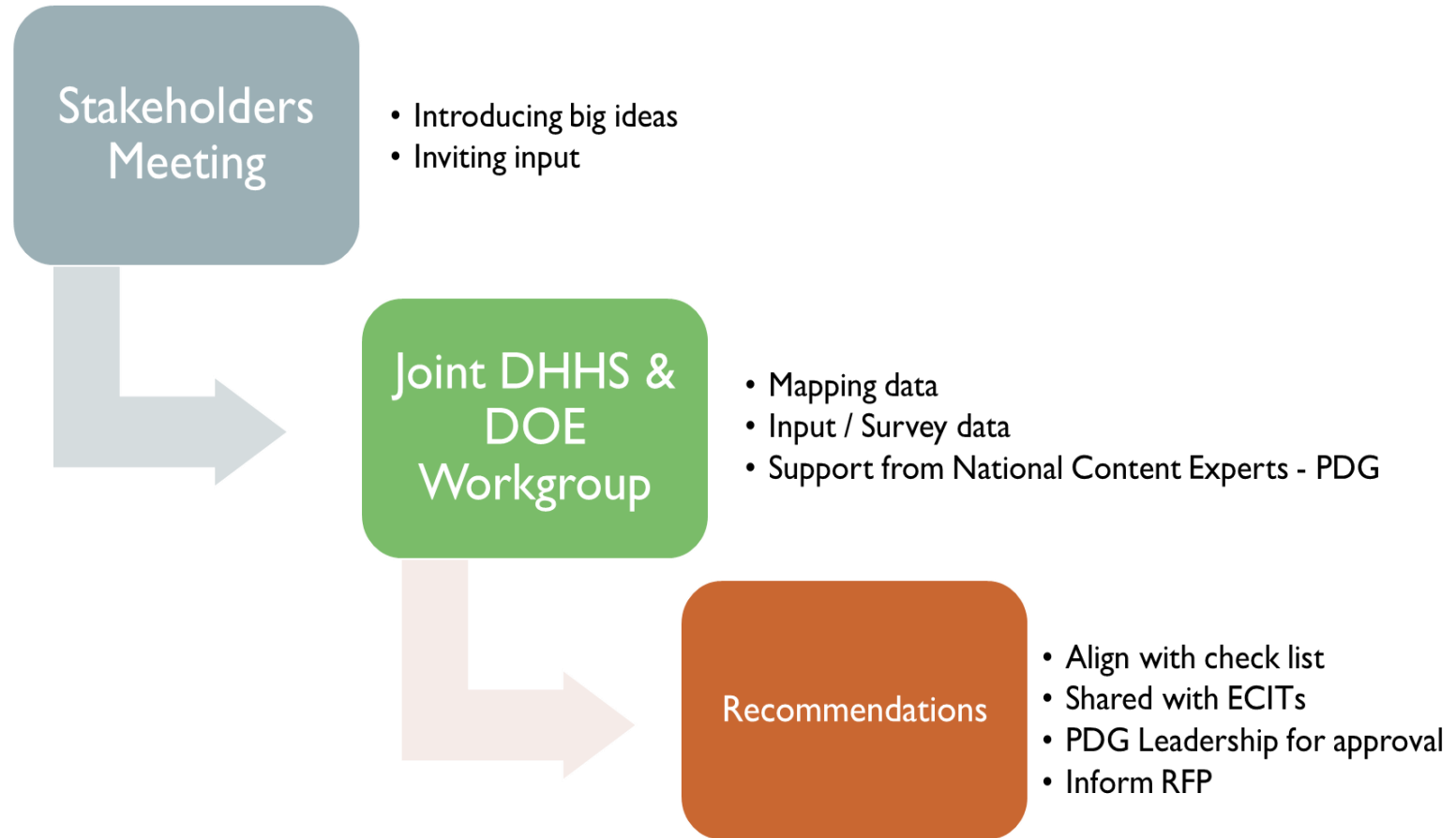
A collaborative system, engaging families, community partners and schools

Reflecting true partnerships between the Department of Health and Human Services, (DHHS) and the Department of Education, (DOE) at the regional and state levels

A coordinated statewide system of regional partners that builds capacity, equips families to support children's readiness for learning, supports family engagement and wellbeing, and encourages quality programs across the state



# The Process



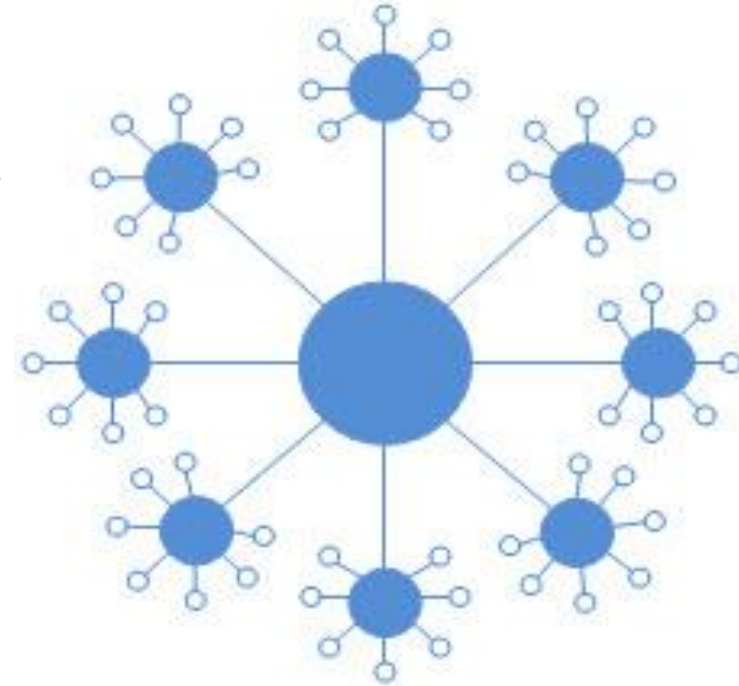
# The Design

Enhances Early Childhood Care and Education, (ECCE)-School-Family Support Partnerships

Regional community partners are connected by Regional Leads

Regional Leads are connected to each other and to state partners, utilizing DHHS and DOE Points of Contact

Coordination, collaboration and communication within and between Regions and State Partners is supported

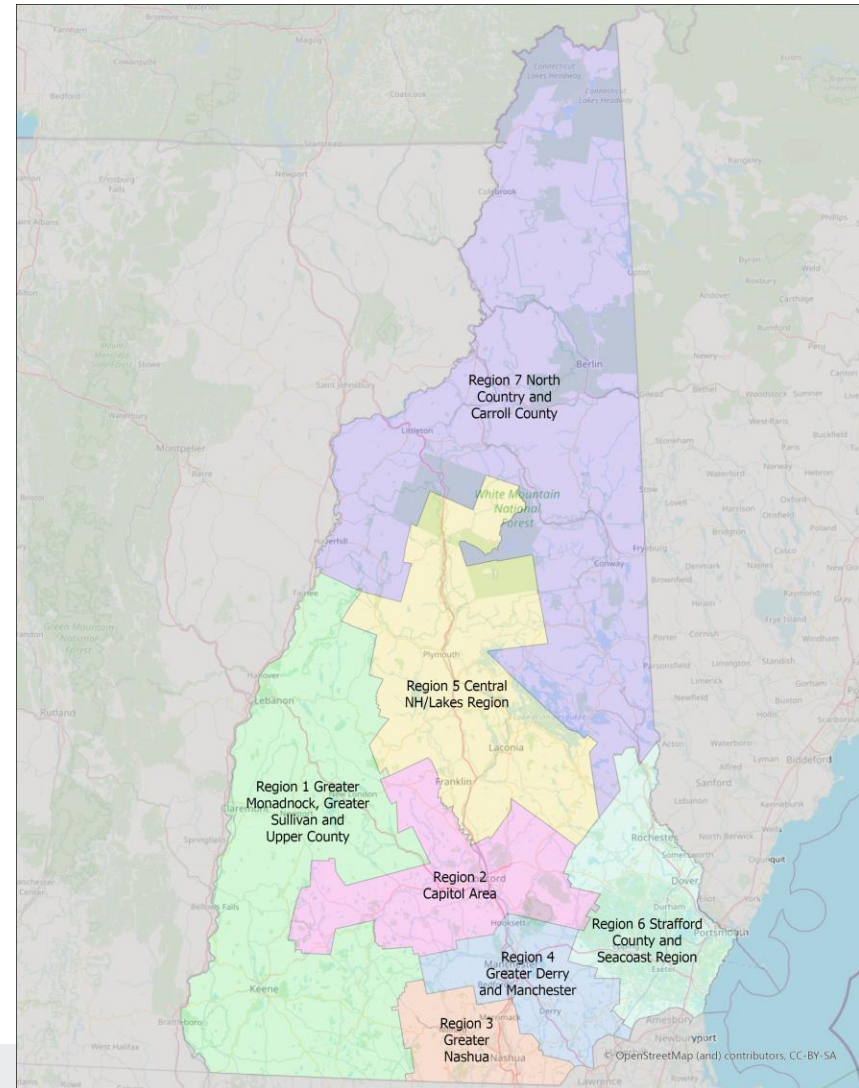


# 7 REGIONAL LEADS

Representing collaboration across early childhood care and education, schools, and family support

Funded through 2022 by the Preschool Development Grant

- Building capacity
- Enhancing cross-sector partnerships
- Supporting regionally specific projects
- Establishing Bi-Directional Communication between Regions and between Regions and State partners



# Regional Leads and Implementation Projects

Regional Leads	Region	Implementation Project Focus
Monadnock United Way	1	Practice-based coaching institute
Granite United Way-Concord	2	Home visiting, play-based learning
United Way of Greater Nashua	3	Pyramid Model, Early Childhood Wraparound, support and Trauma Informed training in childcare, family leadership and engagement activities
Amoskeag Health	4	Pyramid Model
Granite United Way- Granite United Way (for Central NH/Lakes region)	5	Pending: Pyramid Model, developmental screening, home visiting and family support
United Way of Greater Seacoast	6	Playgroups (FRCs, liaisons, trauma)
Children Unlimited	7	Child care workforce (high school, CDA, cohort/coach), Pyramid Model



# Regions' Self-Identified Challenges and Promising Practices

## Challenges

- Partnering
- Data
- Staffing/workforce
- Family Engagement

## Promising Practices

- Data dashboards and Strategy mapping
- Meeting local needs: Diaper pantries and playgroups
- Parent Cafes and Baby and Me
- Partnering with libraries
- Mentoring and coaching
- Child Development Associate training and support
- Trauma response training for local Police Department



# Infrastructure Building: Progress and questions ...

- Progress at the regional level
- Bi-directional communication between Regions and State Partners
- Considerations of structural support needs moving forward
- Opportunities for continued support through braided funding

